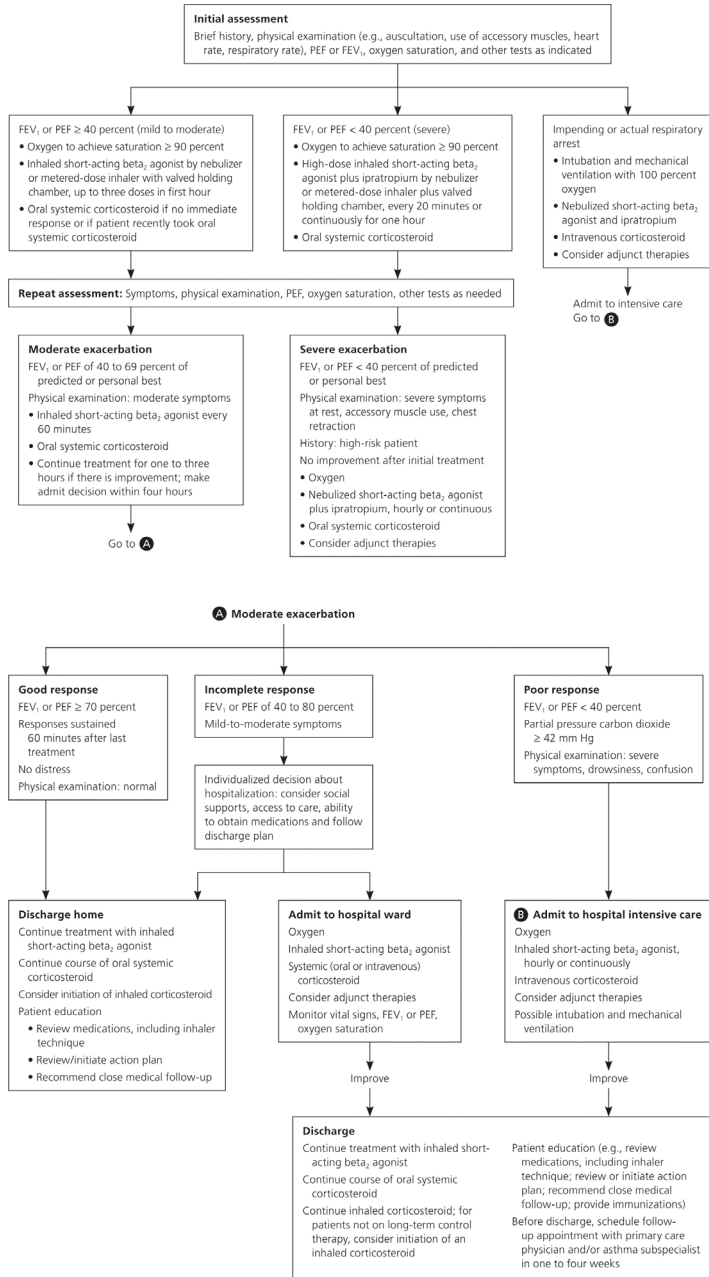


FIGURE 2.

Management of Asthma Exacerbations: Emergency Department and Hospital-Based Treatment



Algorithm for emergency department and inpatient management of acute asthma exacerbations. (FEV1 = forced expiratory volume in one second; PEF = peak expiratory flow.)

Adapted from the National Heart Lung and Blood Institute. National Asthma Education and Prevention Program. Expert panel report 3: Guidelines for the diagnosis and management of asthma; 2007:388. <http://www.nhlbi.nih.gov/guidelines/asthma/asthdln.htm>.